



LIR-6 Polyclonal Antibody

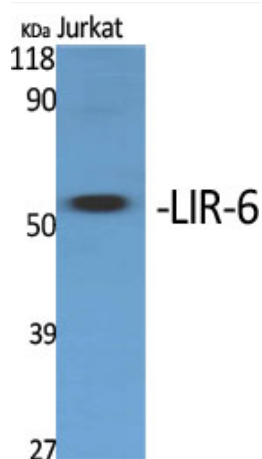
Catalog No	YP-Ab-13942
Isotype	IgG
Reactivity	Human;Rat;Mouse;
Applications	WB;IHC
Gene Name	LILRA1
Protein Name	Leukocyte immunoglobulin-like receptor subfamily A member 1
Immunogen	The antiserum was produced against synthesized peptide derived from human LILRA1. AA range:53-102
Specificity	LIR-6 Polyclonal Antibody detects endogenous levels of LIR-6 protein.
Formulation	Liquid in PBS containing 50% glycerol, 0.5% BSA and 0.02% sodium azide.
Source	Polyclonal, Rabbit,IgG
Purification	The antibody was affinity-purified from rabbit antiserum by affinity-chromatography using epitope-specific immunogen.
Dilution	WB 1:500-2000;IHC-p 1:50-300
Concentration	1 mg/ml
Purity	≥90%
Storage Stability	-20°C/1 year
Synonyms	LILRA1; LIR6; Leukocyte immunoglobulin-like receptor subfamily A member 1; CD85 antigen-like family member I; Leukocyte immunoglobulin-like receptor 6; LIR-6; CD antigen CD85i
Observed Band	53kD
Cell Pathway	Membrane; Single-pass type I membrane protein.
Tissue Specificity	Detected in monocytes and B-cells.
Function	function:May act as receptor for class I MHC antigens.,similarity:Contains 4 Ig-like C2-type (immunoglobulin-like) domains.,tissue specificity:Detected in monocytes and B-cells.,
Background	This gene encodes an activating member of the leukocyte immunoglobulin-like receptor (LIR) family, which is found in a gene cluster at chromosomal region 19q13.4. The encoded protein is predominantly expressed in B cells, interacts with major histocompatibility complex class I ligands, and contributes to the regulation of immune responses. Alternative splicing results in multiple transcript variants encoding different isoforms. [provided by RefSeq, May 2013],
matters needing attention	Avoid repeated freezing and thawing!



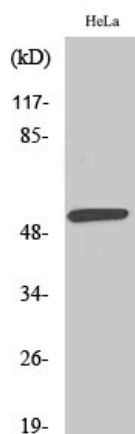
Usage suggestions

This product can be used in immunological reaction related experiments. For more information, please consult technical personnel.

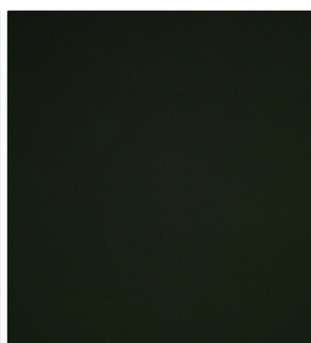
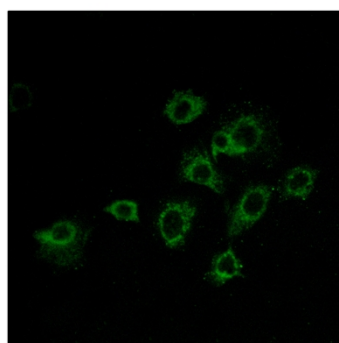
Products Images



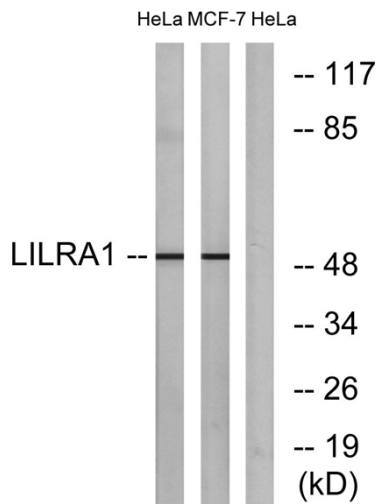
Western Blot analysis of various cells using LIR-6 Polyclonal Antibody



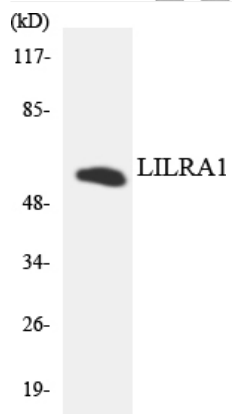
Western Blot analysis of MCF7 cells using LIR-6 Polyclonal Antibody



Immunofluorescence analysis of A549 cells, using LILRA1 Antibody. The picture on the right is blocked with the synthesized peptide.



Western blot analysis of lysates from HeLa and MCF-7 cells, using LILRA1 Antibody. The lane on the right is blocked with the synthesized peptide.



Western blot analysis of the lysates from HeLa cells using LILRA1 antibody.